



- 1. Blue Black (Sul-R:1182)
- 2. Sapphire (Sul-R:1534)
- 3. Avocado (Sul-R:1177)
- 4. (Sul-R:1319)
- 5. True Orange (Sul-R:1168)
- 6. Mimosa Yellow (Sul-R:1187)

Apron.dst

6.46x4.74 inches; 20,708 stitches
6 thread changes; 6 colors



- 1. RGB(0,153,0) (RGB:1)
- 2. RGB(0,0,0) (RGB:2)
- 3. RGB(0,128,0) (RGB:3)
- 4. RGB(255,0,0) (RGB:4)
- 5. RGB(255,255,255) (RGB:5)
- 6. RGB(255,255,0) (RGB:6)

Apron.exp

6.46x4.74 inches; 20,708 stitches
6 thread changes; 6 colors



- 1. Dark Green
- 2. Black
- 3. Dark Green
- 4. Red
- 5. White
- 6. Yellow

Apron.hus

6.46x4.74 inches; 20,708 stitches
6 thread changes; 5 colors



- 1. Meadow (269)
- 2. Black (002)
- 3. Meadow (269)
- 4. Red (225)
- 5. White (001)
- 6. Yellow (204)

Apron.jef

4.74x6.46 inches; 20,713 stitches
6 thread changes; 5 colors



- 1. Meadow (269)
- 2. Black (002)
- 3. Meadow (269)
- 4. Red (225)
- 5. White (001)
- 6. Yellow (204)

Apron.jef+

6.46x4.74 inches; 20,713 stitches
6 thread changes; 5 colors



- 1. Moss Green
- 2. Black
- 3. Deep Green
- 4. Red
- 5. White
- 6. Yellow

Apron.pec

6.46x4.74 inches; 20,718 stitches
6 thread changes; 6 colors



- 1. Moss Green
- 2. Black
- 3. Deep Green
- 4. Red
- 5. White
- 6. Yellow

Apron.pes

4.74x6.46 inches; 20,718 stitches
6 thread changes; 6 colors



- 1. Ivy Green (Sul-R:1277)
- 2. Blue Black (Sul-R:1182)
- 3. Ivy Green (Sul-R:1277)
- 4. (Sul-R:1319)
- 5. Bright White (Sul-R:1001)
- 6. Mimosa Yellow (Sul-R:1187)

Apron.vip

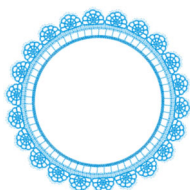
6.46x4.74 inches; 20,708 stitches
6 thread changes; 5 colors



- 1. Mad-P:1901
- 2. Mad-P:1643
- 3. Mad-P:1651
- 4. Mad-P:1878
- 5. Mad-P:1802
- 6. Mad-P:1623

Apron.vp3

6.46x4.74 inches; 20,708 stitches
6 thread changes; 6 colors



- 1. Blue Black (Sul-R:1182)
- 2. Sapphire (Sul-R:1534)

Bonnet.dst

7.43x7.44 inches; 36,136 stitches
2 thread changes; 2 colors



- 1. RGB(0,0,255) (RGB:1)
- 2. RGB(0,128,0) (RGB:2)

Bonnet.exp

7.43x7.44 inches; 36,136 stitches
2 thread changes; 2 colors



- 1. Blue
- 2. Dark Green

Bonnet.hus

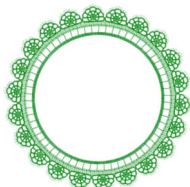
7.43x7.44 inches; 36,136 stitches
2 thread changes; 2 colors



- 1. Blue Ink (262)
- 2. Meadow (269)

Bonnet.jef

7.43x7.44 inches; 36,137 stitches
2 thread changes; 2 colors



- 1. Blue Ink (262)
- 2. Meadow (269)

Bonnet.jef+

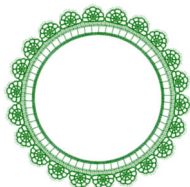
7.43x7.44 inches; 36,137 stitches
2 thread changes; 2 colors



- 1. Ultramarine
- 2. Deep Green

Bonnet.pec

7.43x7.44 inches; 36,138 stitches
2 thread changes; 2 colors



- 1. Ultramarine
- 2. Deep Green

Bonnet.pes

7.43x7.44 inches; 36,138 stitches
2 thread changes; 2 colors



- 1. Cobalt Blue (Sul-R:526)
- 2. Ivy Green (Sul-R:1277)

Bonnet.vip

7.43x7.44 inches; 36,136 stitches
2 thread changes; 2 colors



- 1. Mad-P:1733
- 2. Mad-P:1651

Bonnet.vp3

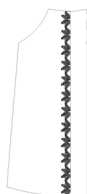
7.43x7.44 inches; 36,136 stitches
2 thread changes; 2 colors



- 1. Blue Black (Sul-R:1182)
- 2. Sapphire (Sul-R:1534)

Dress Shelf.dst

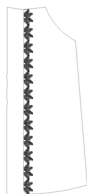
6.37x9.16 inches; 21,949 stitches
2 thread changes; 2 colors



- 1. Blue Black (Sul-R:1182)

Left Side Of The Back.dst

3.84x9.13 inches; 2,781 stitches
1 thread changes; 1 colors



- 1. Blue Black (Sul-R:1182)

Right Side Of The Back.dst

3.84x9.13 inches; 2,781 stitches
1 thread changes; 1 colors



- 1. Blue Black (Sul-R:1182)

Sleeve.dst

4.22x4.07 inches; 1,699 stitches
1 thread changes; 1 colors



- 1. Blue Black (Sul-R:1182)
- 2. Sapphire (Sul-R:1534)

Dress Shelf.exp

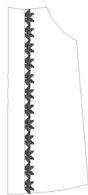
6.37x9.16 inches; 21,949 stitches
2 thread changes; 2 colors



- 1. Blue Black (Sul-R:1182)

Left Side Of The Back.exp

3.84x9.13 inches; 2,781 stitches
1 thread changes; 1 colors



■ 1. Blue Black (Sul-R:1182)

Right Side Of The Back.exp
3.84x9.13 inches; 2,781 stitches
1 thread changes; 1 colors



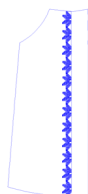
■ 1. RGB(255,0,0) (RGB:1)

Sleeve.exp
4.22x4.07 inches; 1,699 stitches
1 thread changes; 1 colors



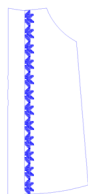
■ 1. Red
■ 2. Dark Green

Dress Shelf.hus
6.37x9.16 inches; 21,949 stitches
2 thread changes; 2 colors



■ 1. Blue

Left Side Of The Back.hus
3.84x9.13 inches; 2,781 stitches
1 thread changes; 1 colors



■ 1. Blue

Right Side Of The Back.hus
3.84x9.13 inches; 2,781 stitches
1 thread changes; 1 colors



■ 1. Dark Red

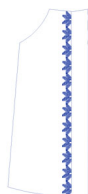
Sleeve.hus
4.22x4.07 inches; 1,699 stitches
1 thread changes; 1 colors



- 1. Red (225)
- 2. Dark Green (248)

Dress Shelf.jef

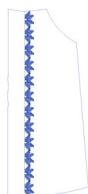
6.37x9.16 inches; 21,950 stitches
2 thread changes; 2 colors



- 1. Blue Ink (262)

Left Side Of The Back.jef

3.84x9.13 inches; 2,781 stitches
1 thread changes; 1 colors



- 1. Blue Ink (262)

Right Side Of The Back.jef

3.84x9.13 inches; 2,781 stitches
1 thread changes; 1 colors



- 1. Cardinal Red (244)

Sleeve.jef

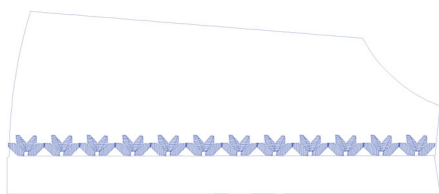
4.22x4.07 inches; 1,697 stitches
1 thread changes; 1 colors



- 1. Red (225)
- 2. Dark Green (248)

Dress Shelf.jef+

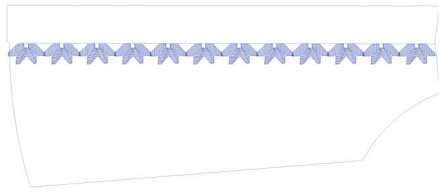
9.16x6.37 inches; 21,950 stitches
2 thread changes; 2 colors



- 1. Blue Ink (262)

Left Side Of The Back.jef+

9.13x3.84 inches; 2,781 stitches
1 thread changes; 1 colors



■ 1. Blue Ink (262)

Right Side Of The Back.jef+
 9.13x3.84 inches; 2,781 stitches
 1 thread changes; 1 colors



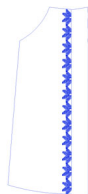
■ 1. Cardinal Red (244)

Sleeve.jef+
 4.22x4.07 inches; 1,697 stitches
 1 thread changes; 1 colors



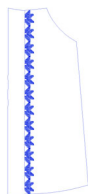
■ 1. Red
 ■ 2. Deep Green

Dress Shelf.pec
 6.38x9.16 inches; 21,973 stitches
 2 thread changes; 2 colors



■ 1. Ultramarine

Left Side Of The Back.pec
 3.84x9.13 inches; 2,785 stitches
 1 thread changes; 1 colors



■ 1. Ultramarine

Right Side Of The Back.pec
 3.84x9.13 inches; 2,785 stitches
 1 thread changes; 1 colors



■ 1. Red

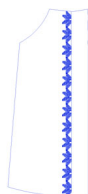
Sleeve.pec
 4.22x4.08 inches; 1,701 stitches
 1 thread changes; 1 colors



- 1. Red
- 2. Deep Green

Dress Shelf.pes

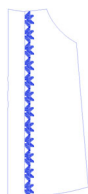
9.16x6.38 inches; 21,972 stitches
2 thread changes; 2 colors



- 1. Ultramarine

Left Side Of The Back.pes

3.84x9.13 inches; 2,785 stitches
1 thread changes; 1 colors



- 1. Ultramarine

Right Side Of The Back.pes

3.84x9.13 inches; 2,785 stitches
1 thread changes; 1 colors



- 1. Red

Sleeve.pes

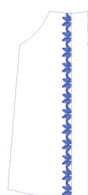
4.22x4.08 inches; 1,701 stitches
1 thread changes; 1 colors



- 1. (Sul-R:1319)
- 2. Ivy Green (Sul-R:1277)

Dress Shelf.vip

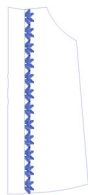
6.37x9.16 inches; 21,949 stitches
2 thread changes; 2 colors



- 1. Cobalt Blue (Sul-R:526)

Left Side Of The Back.vip

3.84x9.13 inches; 2,781 stitches
1 thread changes; 1 colors



- 1. Cobalt Blue (Sul-R:526)

Right Side Of The Back.vip
 3.84x9.13 inches; 2,781 stitches
 1 thread changes; 1 colors



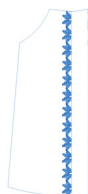
- 1. Lipstick (Sul-R:561)

Sleeve.vip
 4.22x4.07 inches; 1,699 stitches
 1 thread changes; 1 colors



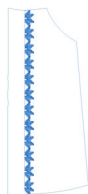
- 1. Mad-P:1878
- 2. Mad-P:1651

Dress Shelf.vp3
 6.37x9.16 inches; 21,949 stitches
 2 thread changes; 2 colors



- 1. Mad-P:1733

Left Side Of The Back.vp3
 3.84x9.13 inches; 2,781 stitches
 1 thread changes; 1 colors



- 1. Mad-P:1733

Right Side Of The Back.vp3
 3.84x9.13 inches; 2,781 stitches
 1 thread changes; 1 colors



- 1. Mad-P:1637

Sleeve.vp3
 4.22x4.07 inches; 1,699 stitches
 1 thread changes; 1 colors