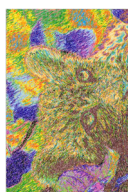


- 1. Blue Black (Sul-R:1182)
- 2. Sapphire (Sul-R:1534)
- 3. Avocado (Sul-R:1177)
- 4. (Sul-R:1319)
- 5. True Orange (Sul-R:1168)
- 6. Mimosa Yellow (Sul-R:1187)
- 7. Med. Steel Gray (Sul-R:1166)
- 8. Hot Pink (Sul-R:1109)
- 9. Cornflower Blue (Sul-R:1249)
- 10.Ivy Green (Sul-R:1277)
- 11.Orange Yellow (Sul-R:1065)
- 12.Hot Pink (Sul-R:1109)
- 13.Peach (Sul-R:1019)
- 14.Eggplant (Sul-R:1302)
- 15.Lt. Avocado (Sul-R:1209)
- 16.Tan (Sul-R:1126)
- 17.Blue Black (Sul-R:1182)
- 18.Sapphire (Sul-R:1534)
- 19.Avocado (Sul-R:1177)

Leopard.dst

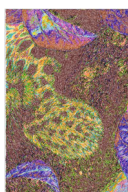
11.81x15.74 inches; 363,041 stitches
19 thread changes; 15 colors



- 1. Blue Black (Sul-R:1182)
- 2. Sapphire (Sul-R:1534)
- 3. Avocado (Sul-R:1177)
- 4. (Sul-R:1319)
- 5. True Orange (Sul-R:1168)
- 6. Mimosa Yellow (Sul-R:1187)
- 7. Med. Steel Gray (Sul-R:1166)
- 8. Hot Pink (Sul-R:1109)
- 9. Cornflower Blue (Sul-R:1249)
- 10.Ivy Green (Sul-R:1277)
- 11.Orange Yellow (Sul-R:1065)
- 12.Hot Pink (Sul-R:1109)
- 13.Peach (Sul-R:1019)
- 14.Eggplant (Sul-R:1302)
- 15.Lt. Avocado (Sul-R:1209)
- 16.Tan (Sul-R:1126)
- 17.Blue Black (Sul-R:1182)
- 18.Sapphire (Sul-R:1534)
- 19.Avocado (Sul-R:1177)
- 20.Dk. Burgundy (Sul-R:1035)

Leopard_1.dst

7.75x11.81 inches; 177,776 stitches
20 thread changes; 16 colors



- 1. Blue Black (Sul-R:1182)
- 2. Sapphire (Sul-R:1534)
- 3. Avocado (Sul-R:1177)
- 4. (Sul-R:1319)
- 5. True Orange (Sul-R:1168)
- 6. Mimosa Yellow (Sul-R:1187)
- 7. Med. Steel Gray (Sul-R:1166)
- 8. Hot Pink (Sul-R:1109)
- 9. Cornflower Blue (Sul-R:1249)
- 10.Ivy Green (Sul-R:1277)
- 11.Orange Yellow (Sul-R:1065)
- 12.Hot Pink (Sul-R:1109)
- 13.Peach (Sul-R:1019)
- 14.Eggplant (Sul-R:1302)
- 15.Lt. Avocado (Sul-R:1209)
- 16.Tan (Sul-R:1126)
- 17.Blue Black (Sul-R:1182)
- 18.Sapphire (Sul-R:1534)
- 19.Avocado (Sul-R:1177)
- 20.Dk. Burgundy (Sul-R:1035)

Leopard_2.dst

7.80x11.80 inches; 178,940 stitches
20 thread changes; 16 colors



- 1. RGB(247,247,240) (RGB:1)
- 2. RGB(194,198,190) (RGB:2)
- 3. RGB(250,235,151) (RGB:3)
- 4. RGB(238,223,197) (RGB:4)
- 5. RGB(219,201,145) (RGB:5)
- 6. RGB(230,180,105) (RGB:6)
- 7. RGB(184,183,56) (RGB:7)
- 8. RGB(163,184,107) (RGB:8)
- 9. RGB(191,159,135) (RGB:9)
- 10.RGB(194,137,64) (RGB:10)
- 11.RGB(77,176,120) (RGB:11)
- 12.RGB(153,129,90) (RGB:12)
- 13.RGB(107,145,84) (RGB:13)
- 14.RGB(172,101,32) (RGB:14)
- 15.RGB(51,133,61) (RGB:15)
- 16.RGB(112,90,61) (RGB:16)
- 17.RGB(145,41,32) (RGB:17)
- 18.RGB(99,46,32) (RGB:18)
- 19.RGB(0,0,0) (RGB:19)

Leopard.exp

11.81x15.74 inches; 363,041 stitches
19 thread changes; 19 colors



- 1. RGB(0,0,255) (RGB:1)
- 2. RGB(247,247,240) (RGB:2)
- 3. RGB(194,198,190) (RGB:3)
- 4. RGB(250,235,151) (RGB:4)
- 5. RGB(238,223,197) (RGB:5)
- 6. RGB(219,201,145) (RGB:6)
- 7. RGB(230,180,105) (RGB:7)
- 8. RGB(184,183,56) (RGB:8)
- 9. RGB(163,184,107) (RGB:9)
- 10.RGB(191,159,135) (RGB:10)
- 11.RGB(194,137,64) (RGB:11)
- 12.RGB(77,176,120) (RGB:12)
- 13.RGB(153,129,90) (RGB:13)
- 14.RGB(107,145,84) (RGB:14)
- 15.RGB(172,101,32) (RGB:15)
- 16.RGB(51,133,61) (RGB:16)
- 17.RGB(112,90,61) (RGB:17)
- 18.RGB(145,41,32) (RGB:18)
- 19.RGB(99,46,32) (RGB:19)
- 20.RGB(0,0,0) (RGB:20)

Leopard_1.exp

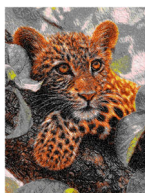
7.75x11.81 inches; 177,776 stitches
20 thread changes; 20 colors



- 1. RGB(0,0,255) (RGB:1)
- 2. RGB(247,247,240) (RGB:2)
- 3. RGB(194,198,190) (RGB:3)
- 4. RGB(250,235,151) (RGB:4)
- 5. RGB(238,223,197) (RGB:5)
- 6. RGB(219,201,145) (RGB:6)
- 7. RGB(230,180,105) (RGB:7)
- 8. RGB(184,183,56) (RGB:8)
- 9. RGB(163,184,107) (RGB:9)
- 10.RGB(191,159,135) (RGB:10)
- 11.RGB(194,137,64) (RGB:11)
- 12.RGB(77,176,120) (RGB:12)
- 13.RGB(153,129,90) (RGB:13)
- 14.RGB(107,145,84) (RGB:14)
- 15.RGB(172,101,32) (RGB:15)
- 16.RGB(51,133,61) (RGB:16)
- 17.RGB(112,90,61) (RGB:17)
- 18.RGB(145,41,32) (RGB:18)
- 19.RGB(99,46,32) (RGB:19)
- 20.RGB(0,0,0) (RGB:20)

Leopard_2.exp

7.80x11.80 inches; 178,940 stitches
20 thread changes; 20 colors



- | | | |
|-----------------|-----------------|----------------|
| 1. White | 8. Grey | 15. Dark Grey |
| 2. Light Grey | 9. Grey | 16. Dark Grey |
| 3. Light Yellow | 10. Light Brown | 17. Dark Brown |
| 4. Light Pink | 11. Grey | 18. Dark Brown |
| 5. Light Grey | 12. Grey | 19. Black |
| 6. Light Orange | 13. Grey | |
| 7. Dark Yellow | 14. Brown | |

Leopard.hus

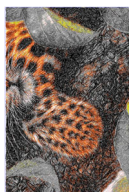
11.81x15.74 inches; 363,041 stitches
19 thread changes; 12 colors



- | | | |
|-----------------|-----------------|----------------|
| 1. Blue | 8. Dark Yellow | 15. Brown |
| 2. White | 9. Grey | 16. Dark Grey |
| 3. Light Grey | 10. Grey | 17. Dark Grey |
| 4. Light Yellow | 11. Light Brown | 18. Dark Brown |
| 5. Light Pink | 12. Grey | 19. Dark Brown |
| 6. Light Grey | 13. Grey | 20. Black |
| 7. Light Orange | 14. Grey | |

Leopard_1.hus

7.75x11.81 inches; 177,776 stitches
20 thread changes; 13 colors



- | | | |
|-----------------|-----------------|----------------|
| 1. Blue | 8. Dark Yellow | 15. Brown |
| 2. White | 9. Grey | 16. Dark Grey |
| 3. Light Grey | 10. Grey | 17. Dark Grey |
| 4. Light Yellow | 11. Light Brown | 18. Dark Brown |
| 5. Light Pink | 12. Grey | 19. Dark Brown |
| 6. Light Grey | 13. Grey | 20. Black |
| 7. Light Orange | 14. Grey | |

Leopard_2.hus

7.80x11.80 inches; 178,940 stitches
20 thread changes; 13 colors



- | | | |
|----------------------|-------------------------|----------------------|
| 1. White (001) | 8. Olive Drab (268) | 15. Green (226) |
| 2. Beige Gray (223) | 9. Umber (237) | 16. Sepia (259) |
| 3. Mustard (270) | 10. Old Gold (272) | 17. Wine Red (215) |
| 4. Pale Yellow (210) | 11. Emerald Green (250) | 18. Dark Sepia (260) |
| 5. Bamboo (224) | 12. Olive Drab (268) | 19. Black (002) |
| 6. Gold (003) | 13. Moss Green (246) | |
| 7. Old Gold (272) | 14. Sienna (258) | |

Leopard.jef

11.81x15.74 inches; 363,059 stitches
19 thread changes; 17 colors



- | | | |
|----------------------|-------------------------|----------------------|
| 1. Blue Ink (262) | 8. Old Gold (272) | 15. Sienna (258) |
| 2. White (001) | 9. Olive Drab (268) | 16. Green (226) |
| 3. Beige Gray (223) | 10. Umber (237) | 17. Sepia (259) |
| 4. Mustard (270) | 11. Old Gold (272) | 18. Wine Red (215) |
| 5. Pale Yellow (210) | 12. Emerald Green (250) | 19. Dark Sepia (260) |
| 6. Bamboo (224) | 13. Olive Drab (268) | 20. Black (002) |
| 7. Gold (003) | 14. Moss Green (246) | |

Leopard_1.jef

7.75x11.81 inches; 177,795 stitches
20 thread changes; 18 colors



- | | | |
|----------------------|-------------------------|----------------------|
| 1. Blue Ink (262) | 8. Old Gold (272) | 15. Sienna (258) |
| 2. White (001) | 9. Olive Drab (268) | 16. Green (226) |
| 3. Beige Gray (223) | 10. Umber (237) | 17. Sepia (259) |
| 4. Mustard (270) | 11. Old Gold (272) | 18. Wine Red (215) |
| 5. Pale Yellow (210) | 12. Emerald Green (250) | 19. Dark Sepia (260) |
| 6. Bamboo (224) | 13. Olive Drab (268) | 20. Black (002) |
| 7. Gold (003) | 14. Moss Green (246) | |

Leopard_2.jef

7.80x11.80 inches; 178,959 stitches
20 thread changes; 18 colors



- | | | |
|----------------------|------------------------|---------------------|
| 1. White (001) | 8. Olive Drab (268) | 15.Green (226) |
| 2. Beige Gray (223) | 9. Umber (237) | 16.Sepia (259) |
| 3. Mustard (270) | 10.Old Gold (272) | 17.Wine Red (215) |
| 4. Pale Yellow (210) | 11.Emerald Green (250) | 18.Dark Sepia (260) |
| 5. Bamboo (224) | 12.Olive Drab (268) | 19.Black (002) |
| 6. Gold (003) | 13.Moss Green (246) | |
| 7. Old Gold (272) | 14.Sienna (258) | |

Leopard.jef+

11.81x15.74 inches; 363,059 stitches
19 thread changes; 17 colors



- | | | |
|----------------------|------------------------|---------------------|
| 1. Blue Ink (262) | 8. Old Gold (272) | 15.Sienna (258) |
| 2. White (001) | 9. Olive Drab (268) | 16.Green (226) |
| 3. Beige Gray (223) | 10.Umber (237) | 17.Sepia (259) |
| 4. Mustard (270) | 11.Old Gold (272) | 18.Wine Red (215) |
| 5. Pale Yellow (210) | 12.Emerald Green (250) | 19.Dark Sepia (260) |
| 6. Bamboo (224) | 13.Olive Drab (268) | 20.Black (002) |
| 7. Gold (003) | 14.Moss Green (246) | |

Leopard_1.jef+

7.75x11.81 inches; 177,795 stitches
20 thread changes; 18 colors



- | | | |
|----------------------|------------------------|---------------------|
| 1. Blue Ink (262) | 8. Old Gold (272) | 15.Sienna (258) |
| 2. White (001) | 9. Olive Drab (268) | 16.Green (226) |
| 3. Beige Gray (223) | 10.Umber (237) | 17.Sepia (259) |
| 4. Mustard (270) | 11.Old Gold (272) | 18.Wine Red (215) |
| 5. Pale Yellow (210) | 12.Emerald Green (250) | 19.Dark Sepia (260) |
| 6. Bamboo (224) | 13.Olive Drab (268) | 20.Black (002) |
| 7. Gold (003) | 14.Moss Green (246) | |

Leopard_2.jef+

7.80x11.80 inches; 178,959 stitches
20 thread changes; 18 colors



- | | | |
|------------------|-----------------|------------------|
| 1. White | 8. Russet Brown | 15.Emerald Green |
| 2. Warm Gray | 9. Silver | 16.Dark Gray |
| 3. Cream Brown | 10.Brass | 17.Dark Brown |
| 4. Linen | 11.Mint Green | 18.Dark Gray |
| 5. Warm Gray | 12.Russet Brown | 19.Black |
| 6. Reddish Brown | 13.Dark Gray | |
| 7. Brass | 14.Amber Red | |

Leopard.pec

11.81x15.12 inches; 364,071 stitches
19 thread changes; 14 colors



- | | | |
|------------------|-----------------|------------------|
| 1. Ultramarine | 8. Brass | 15.Amber Red |
| 2. White | 9. Russet Brown | 16.Emerald Green |
| 3. Warm Gray | 10.Silver | 17.Dark Gray |
| 4. Cream Brown | 11.Brass | 18.Dark Brown |
| 5. Linen | 12.Mint Green | 19.Dark Gray |
| 6. Warm Gray | 13.Russet Brown | 20.Black |
| 7. Reddish Brown | 14.Dark Gray | |

Leopard_1.pec

7.75x11.81 inches; 178,404 stitches
20 thread changes; 15 colors



- | | | |
|------------------|-----------------|------------------|
| 1. Ultramarine | 8. Brass | 15.Amber Red |
| 2. White | 9. Russet Brown | 16.Emerald Green |
| 3. Warm Gray | 10.Silver | 17.Dark Gray |
| 4. Cream Brown | 11.Brass | 18.Dark Brown |
| 5. Linen | 12.Mint Green | 19.Dark Gray |
| 6. Warm Gray | 13.Russet Brown | 20.Black |
| 7. Reddish Brown | 14.Dark Gray | |

Leopard_2.pec

7.80x11.80 inches; 179,624 stitches
20 thread changes; 15 colors



- | | | |
|------------------|------------------|-------------------|
| 1. White | 8. Russet Brown | 15. Emerald Green |
| 2. Warm Gray | 9. Silver | 16. Dark Gray |
| 3. Cream Brown | 10. Brass | 17. Dark Brown |
| 4. Linen | 11. Mint Green | 18. Dark Gray |
| 5. Warm Gray | 12. Russet Brown | 19. Black |
| 6. Reddish Brown | 13. Dark Gray | |
| 7. Brass | 14. Amber Red | |

Leopard.pes

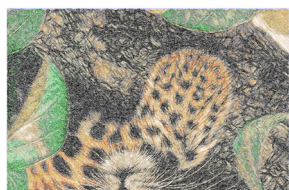
11.81x15.12 inches; 364,071 stitches
19 thread changes; 14 colors



- | | | |
|------------------|------------------|-------------------|
| 1. Ultramarine | 8. Brass | 15. Amber Red |
| 2. White | 9. Russet Brown | 16. Emerald Green |
| 3. Warm Gray | 10. Silver | 17. Dark Gray |
| 4. Cream Brown | 11. Brass | 18. Dark Brown |
| 5. Linen | 12. Mint Green | 19. Dark Gray |
| 6. Warm Gray | 13. Russet Brown | 20. Black |
| 7. Reddish Brown | 14. Dark Gray | |

Leopard_1.pes

11.81x7.75 inches; 178,404 stitches
20 thread changes; 15 colors



- | | | |
|------------------|------------------|-------------------|
| 1. Ultramarine | 8. Brass | 15. Amber Red |
| 2. White | 9. Russet Brown | 16. Emerald Green |
| 3. Warm Gray | 10. Silver | 17. Dark Gray |
| 4. Cream Brown | 11. Brass | 18. Dark Brown |
| 5. Linen | 12. Mint Green | 19. Dark Gray |
| 6. Warm Gray | 13. Russet Brown | 20. Black |
| 7. Reddish Brown | 14. Dark Gray | |

Leopard_2.pes

11.80x7.80 inches; 179,624 stitches
20 thread changes; 15 colors



- | | | |
|----------------------------------|-----------------------------------|------------------------------|
| 1. Pale Sea Foam (Sul-R:1086) | 8. Chartreuse (Sul-R:1322) | 15. Grass Green (Sul-R:1049) |
| 2. Dk. Whisper Gray (Sul-R:1327) | 9. Dk. Ecru (Sul-R:1128) | 16. Burnt Toast (Sul-R:1265) |
| 3. Primrose (Sul-R:1066) | 10. Autumn Gold (Sul-R:523) | 17. Med. Maple (Sul-R:1216) |
| 4. Ecru (Sul-R:1082) | 11. Dk. Willow Green (Sul-R:1280) | 18. (Sul-R:535) |
| 5. Med. Dk. Ecru (Sul-R:1054) | 12. (Sul-R:1269) | 19. Blue Black (Sul-R:1182) |
| 6. (Sul-R:622) | 13. Moss Green (Sul-R:630) | |
| 7. (Sul-R:1244) | 14. Tan (Sul-R:1126) | |

Leopard.vip

11.81x15.74 inches; 363,041 stitches
19 thread changes; 19 colors



- | | | |
|----------------------------------|-----------------------------------|------------------------------|
| 1. Cobalt Blue (Sul-R:526) | 8. (Sul-R:1244) | 15. Tan (Sul-R:1126) |
| 2. Pale Sea Foam (Sul-R:1086) | 9. Chartreuse (Sul-R:1322) | 16. Grass Green (Sul-R:1049) |
| 3. Dk. Whisper Gray (Sul-R:1327) | 10. Dk. Ecru (Sul-R:1128) | 17. Burnt Toast (Sul-R:1265) |
| 4. Primrose (Sul-R:1066) | 11. Autumn Gold (Sul-R:523) | 18. Med. Maple (Sul-R:1216) |
| 5. Ecru (Sul-R:1082) | 12. Dk. Willow Green (Sul-R:1280) | 19. (Sul-R:535) |
| 6. Med. Dk. Ecru (Sul-R:1054) | 13. (Sul-R:1269) | 20. Blue Black (Sul-R:1182) |
| 7. (Sul-R:622) | 14. Moss Green (Sul-R:630) | |

Leopard_1.vip

7.75x11.81 inches; 177,776 stitches
20 thread changes; 20 colors



- | | | |
|----------------------------------|-----------------------------------|------------------------------|
| 1. Cobalt Blue (Sul-R:526) | 8. (Sul-R:1244) | 15. Tan (Sul-R:1126) |
| 2. Pale Sea Foam (Sul-R:1086) | 9. Chartreuse (Sul-R:1322) | 16. Grass Green (Sul-R:1049) |
| 3. Dk. Whisper Gray (Sul-R:1327) | 10. Dk. Ecru (Sul-R:1128) | 17. Burnt Toast (Sul-R:1265) |
| 4. Primrose (Sul-R:1066) | 11. Autumn Gold (Sul-R:523) | 18. Med. Maple (Sul-R:1216) |
| 5. Ecru (Sul-R:1082) | 12. Dk. Willow Green (Sul-R:1280) | 19. (Sul-R:535) |
| 6. Med. Dk. Ecru (Sul-R:1054) | 13. (Sul-R:1269) | 20. Blue Black (Sul-R:1182) |
| 7. (Sul-R:622) | 14. Moss Green (Sul-R:630) | |

Leopard_2.vip

7.80x11.80 inches; 178,940 stitches
20 thread changes; 20 colors



- 1. Mad-P:1804 8. Mad-P:1884 15.Mad-P:1901
- 2. Mad-P:1886 9. Mad-P:1738 16.Mad-P:1862
- 3. Mad-P:1723 10.Mad-P:1884 17.Mad-P:1621
- 4. Mad-P:1622 11.Mad-P:1960 18.Mad-P:1974
- 5. Mad-P:1682 12.Mad-P:1884 19.Mad-P:1643
- 6. Mad-P:1927 13.Mad-P:1862
- 7. Mad-P:1884 14.Mad-P:1855

Leopard.vp3

11.81x15.74 inches; 363,041 stitches
19 thread changes; 15 colors



- 1. Mad-P:1733 8. Mad-P:1884 15.Mad-P:1855
- 2. Mad-P:1804 9. Mad-P:1884 16.Mad-P:1901
- 3. Mad-P:1886 10.Mad-P:1738 17.Mad-P:1862
- 4. Mad-P:1723 11.Mad-P:1884 18.Mad-P:1621
- 5. Mad-P:1622 12.Mad-P:1960 19.Mad-P:1974
- 6. Mad-P:1682 13.Mad-P:1884 20.Mad-P:1643
- 7. Mad-P:1927 14.Mad-P:1862

Leopard_1.vp3

7.75x11.81 inches; 177,776 stitches
20 thread changes; 16 colors



- 1. Mad-P:1733 8. Mad-P:1884 15.Mad-P:1855
- 2. Mad-P:1804 9. Mad-P:1884 16.Mad-P:1901
- 3. Mad-P:1886 10.Mad-P:1738 17.Mad-P:1862
- 4. Mad-P:1723 11.Mad-P:1884 18.Mad-P:1621
- 5. Mad-P:1622 12.Mad-P:1960 19.Mad-P:1974
- 6. Mad-P:1682 13.Mad-P:1884 20.Mad-P:1643
- 7. Mad-P:1927 14.Mad-P:1862

Leopard_2.vp3

7.80x11.80 inches; 178,940 stitches
20 thread changes; 16 colors